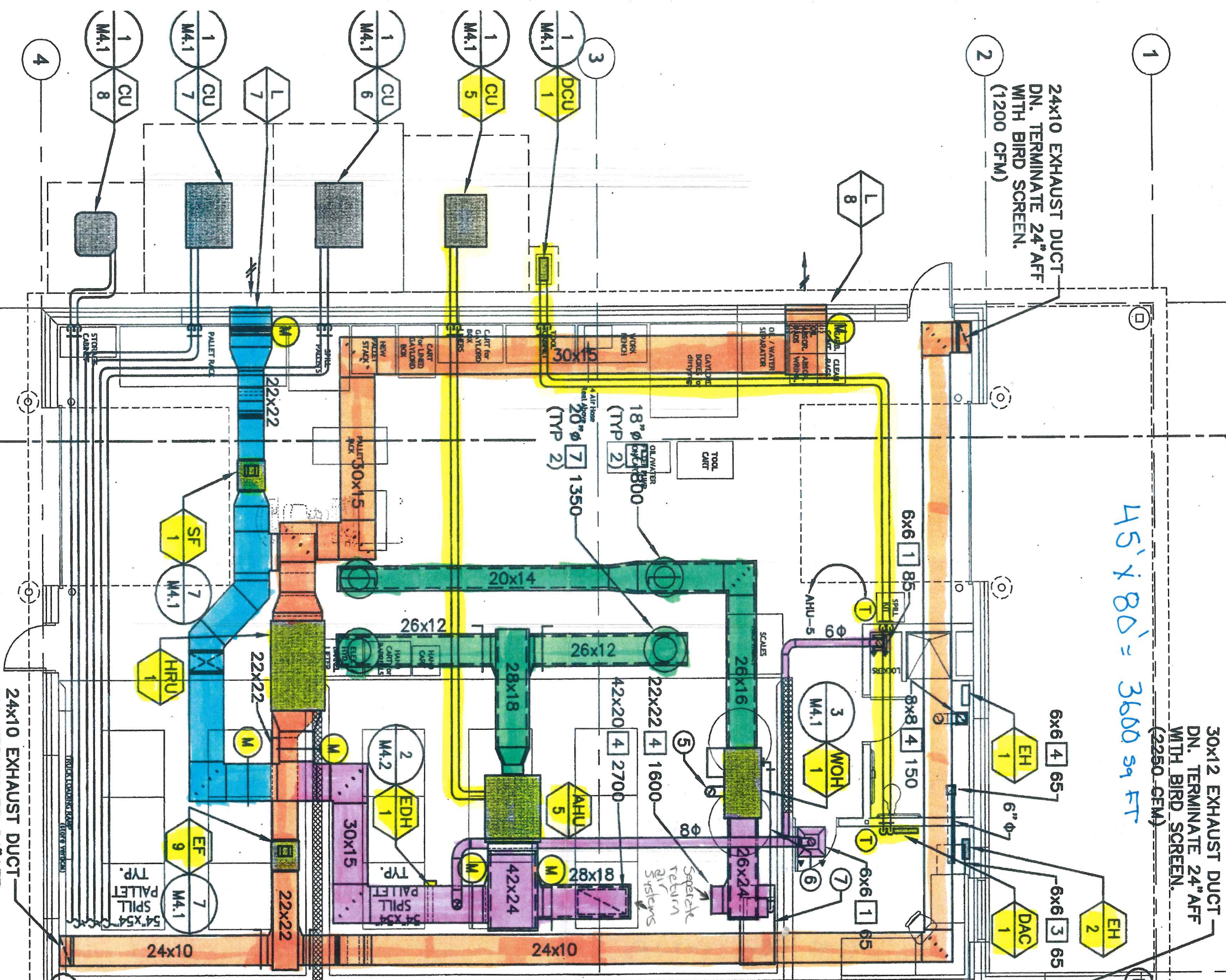


- 1) Damper motors @ AHU can select Area return or outside/outside Heat Recovered Air
- 2) Damper motors @ HRU allow AHU Return to be outside or Heat Recovered outside air.



45' x 80' = 3600 sq FT
(2250 CFM)

- HVAC Equipment
- Exhaust Duct
- Supply Air
- Outside Air
- Return Air

- EH = Electric Heater (1350 CFM)
- DAC = Ductless Air Conditioner
- WOH = Waste Oil Heater
- AHU = Air Handling Unit
- EDH = Electric Duct Heater
- EF = Exhaust Fan
- HRU = Heat Recovery Unit
- M = Damper motor
- T = Thermostat

COPY - NOT TO SCALE -

M3.5